

DUR-A-LIFT

DO-32 • DO-36

Overcenter Aerial Lifts

The DO Models have working heights of up to 41 feet and side reaches to 30 feet on a 15,000 GVW chassis with pedestal mounted outriggers. Our new boom controls give you the finest feathering capability in the industry and a new space saving pedestal gives you more work area in the truck. These features, along with several others, make the DO Models the ones to consider for your next aerial lift.



STANDARD FEATURES

CONTROLS

- Full Pressure Proportional Controls mounted on the basket for easy access in all boom positions.
- Upper Control Shut-off provided at turntable.
- Three Control Levers at the turntable and basket with a deadman at the basket.
- Engine Start/Stop from the basket.

HYDRAULIC SYSTEM

- Rated Pressure is 2200 PSI.
- Operating Pressure is 2000 PSI.
- 5 to 7 GPM Pump Flow.
- 11 gallon Oil Reservoir.
- Open Center System.

MECHANICAL SYSTEM

- Basket levelling by totally enclosed glass rods and chain parallelogram system with easy access for service.
- Rotation by hydraulically driven spur gear with shearball rotation bearing.
- Basket Support.

OPTIONAL FEATURES

- Continuous Rotation
- Pedestal Mounted Outriggers
- Torsion Bar
- 12V DC Full Function Backup System
- Single Hand Control Lever
- Basket Liner
- Basket and Control Cover
- Hydraulic Took Circuit at Basket and Pedestal
- Basket Tilt System
- Automatic or Two-speed Throttle Advance
- Upper Boom Electrical Test Bands
- Lower Boom Fiberglass Insert
- Lower Boom Lifting Hook

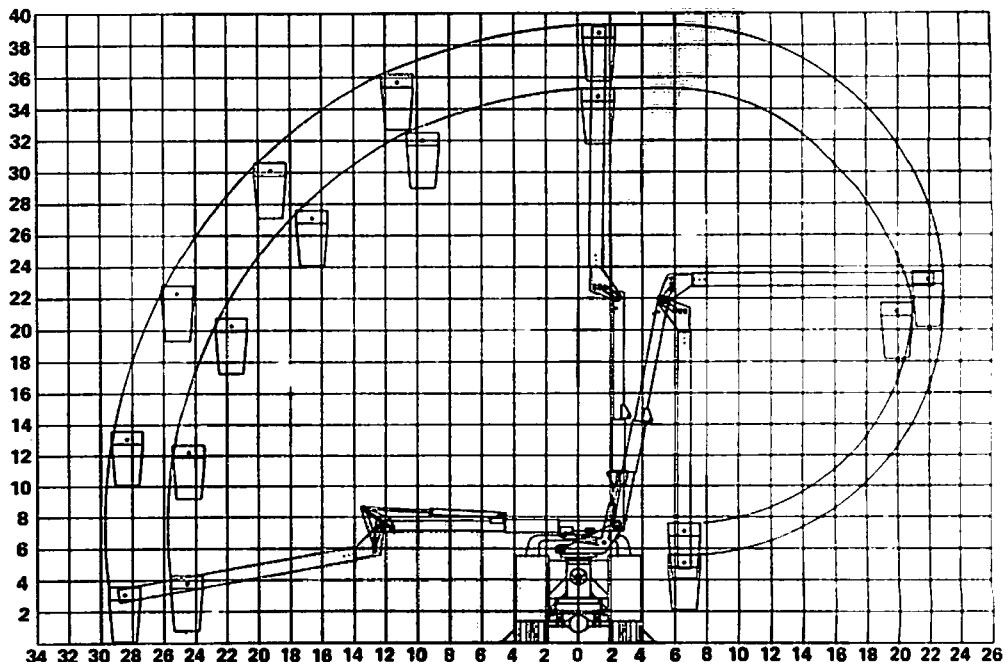
SPECIFICATIONS

| | MODEL DO-32 | MODEL DO-36 |
|------------------------------|----------------|----------------|
| Height to Bottom of Platform | 32 ft. | 36 ft. |
| Working Height | 37 ft. | 41 ft. |
| Side Reach | 26 ft. - 4 in. | 30 ft. - 4 in. |
| Stowed Travel Height | 9 ft. - 8 in. | 9 ft. - 8 in. |
| Basket Capacity | 350 lb. | 350 lb. |
| Approx. Installed Weight | 2400 lb. | 2500 lb. |
| Lower Boom Travel | 0 - 100 deg. | 0 - 100 deg. |
| Upper Boom Travel | 0 - 196 deg. | 0 - 196 deg. |
| Lower Boom Insulation Gap | 12 in. | 12¼ in. |
| Upper Boom Fiberglass Length | 154 in. | 182 in. |

SAFETY FEATURES

- Integral Holding Valves in each cylinder.
- Pressure Relief Valve.
- Upper Boom constructed of fiberglass and rated for work voltages to 46kv and below.
- Non-conductive hoses and fiberglass rods provide levelling and control through the insulated boom section.
- Emergency Stop System.

REACH DIAGRAM



DUR-A-LIFT, INC.
P.O. BOX 31
GEORGE, IOWA 51237
PHONE: 712-475-2804
FAX: 712-475-2809

Distributed by: