

DINO XTC II Series

DINO® SPIDER / CRAWLER

Meet

DINO XTC II

All-terrain excellence



DINOLIFT
UP TO THE JOB

100% up to the job

- Working heights from 60 to 72 ft
- Excellent levelling capability
- For extreme working conditions

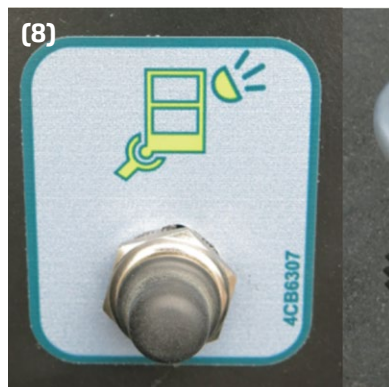
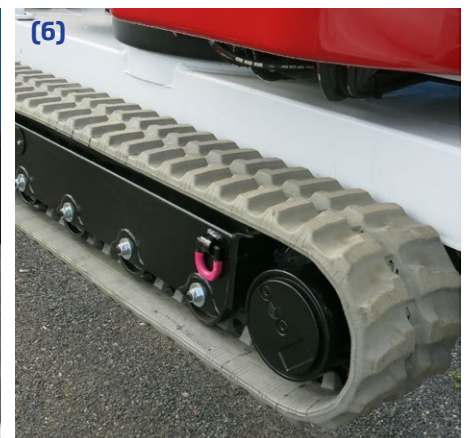
Standard features in all DINO XTC II models

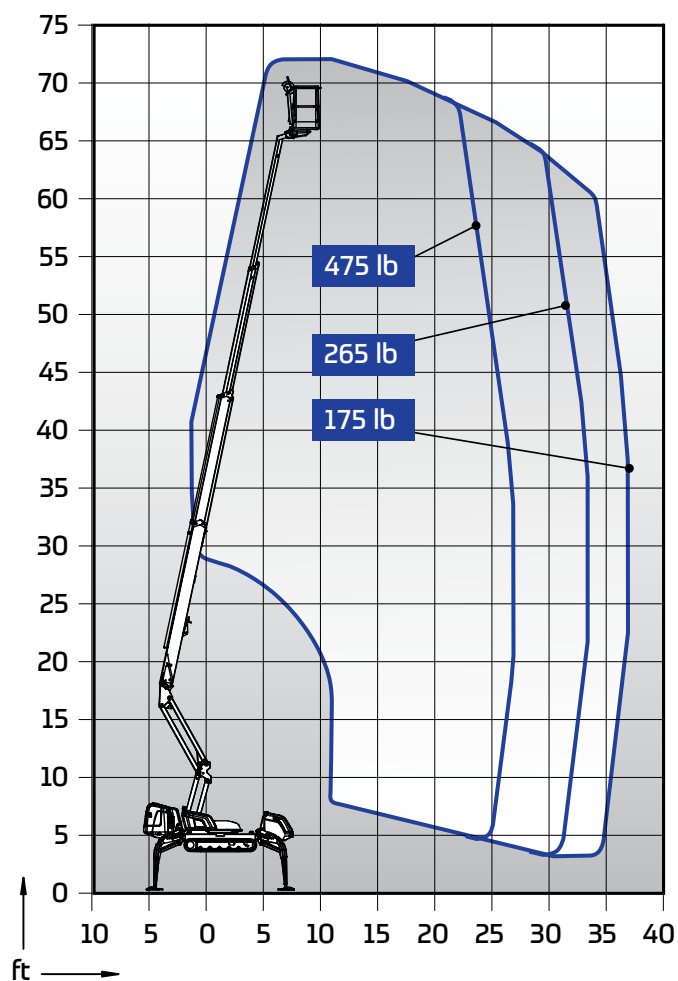
- Compact and narrow; width 4 ft 7 in / 3 ft 10 in
- Extremely stable to drive – long tracks; low ground pressure – low center of gravity
- Strong diesel engine, excellent gradeability 43 % **(1)**
- Levelling to the max. inclination 16° **(2)**
- Automatic levelling
- Hydraulic basket rotation 180° **(3)**
- Easy-entry basket **(4)**
- Continuous rotation of the boom
- AC sockets in the basket



Options available for all DINO XTC II models:

- User-friendly radio control **(5)**
- 230/110VAC electric motor
- Non-marking tracks **(6)**
- DINO SafeGuard secondary guarding
- Special colour **(7)**
- Narrow basket 2 ft 4 in x 3 ft 7 in
- LED working lights **(8)**





Technical data	
	72XTC II
Max. working height	72 ft 6 in
Max. platform height	65 ft 11 in
Max. outreach	36 ft 1 in
Support width	11 ft 7 in / 12 ft 12 in
Lifting capacity	475 lb
Basket size	2 ft 4 in x 4 ft 3 in
Boom rotation	cont.
Basket rotation	180°
Boom control	proport.
Transport length	20 ft 8 in
Transport width	4 ft 7 in / 3 ft 10 in
Transport height	6 ft 7 in
Weight	6745 lb
AC socket in the basket x 2	std
Diesel engine Kubota 17.3 kW	std
Length of tracks	6 ft 4 in
Gradeability	43 %
Max. levelling inclination	16°
Drive speed	0.9 / 1.5 mph
Automatic levelling	std
Radio control	option
Electric motor 110/230VAC	option

Meet

DINO XTC II



DINO aerial work platforms are known for their quality, reliability and safety.
We design and build every DINO at our factory in Finland.

We take no shortcuts. We make no compromises. We make machines that help you work at height with maximum confidence. In all conditions. In all terrains.

Get in touch with us to build your own DINO.

DINOLIFT

UP TO THE JOB

Dinolift Oy | Raikkolantie 145 • FI-32210 LOIMAA, FINLAND

Tel: +358 (0)20 1772 400 • E-mail: info@dinolift.com

www.dinolift.com

Technical specifications are subject to change without prior notice.

©Dinolift Oy | 19.11.2024